

Calico Capers Quilt Guild

www.ccqg.org

MODERN

Modern quilts are primarily functional and inspired by modern design. Modern quilters work in different styles and define modern quilting in different ways, but several characteristics often appear which may help identify a modern quilt. These include, but are not limited to:

- ξ Use of bold colors and prints
- ξ High contrast & graphic areas of solid color
- ξ Improvisational piecing
- ξ Minimalism
- ξ Expansive negative space
- ξ Alternate grid work

"Modern traditionalism" or the updating of classic quilt designs is also often seen in modern quilting.

Modern quilting has existed in many forms for much of the 20th century. It wasn't until the 2000's that quilts with a modern aesthetic began to appear in greater numbers and quilters began to describe themselves as modern.

A defining event occurred in 1998 when Martha Stewart Living featured Denyse Schmidt, calling her quilts a "chic, modernist aesthetic." For many quilters in the early days of the movement, this was a key inspirational moment. The growth of the movement was facilitated by four factors:

MODERN QUILT BLOCKS

Common quilt designs found in modern quilting blocks include:

- *The traditional log cabin is a popular choice for modern quilters. Modern log cabin blocks are often constructed of non-uniform sized pieces.
- *Modern stars can be made from traditional star patterns using vivid fabrics or constructed using off-set points.
- *String blocks are blocks made of strips of varying sizes. String blocks are generally trimmed to either square or rectangular shapes and then set together.
- *Circles, pied or appliqué are another choice for modern quilt designs. Circles are the perfect showcase block for larger print fabrics.
- *Triangle shapes lend themselves to modern quilting with the many interesting possibilities that come from setting them together.



- * Cultural shift of quality design being recognized by the general public
- ** Affordable digital cameras
- ** Changing fabric industry
- * Rise of social media.

In 2002, the Quilts of Gee's Bend exhibit at the Museum of Fine Arts Houston and the publication of Yoshiko Jinzenji's book, Quilt Artistry, further provided inspiration to a small but devoted group of modernist minded quilters.

In 2005, the first online quilt alongs were established on blogs and awareness continued to increase in the online world.

The Flickr group Fresh Modern Quilts, established in 2008, provided the first online centralized social media venue for quilters in the movement. With that flickr group and many active blogs, the online world of modern quilting took off like wildfire.

In 2009, the Modern Quilt Guild was founded giving the online community a chance to form in person connections with other modern quilters. The Modern Quilt Guild's role in this amazing and evolving movement is thrilling and we can't wait to see what comes next!

<http://www.themodernquiltguild.com/content/about-mqg>

*Rectangles may be used in modern quilt block construction. Their shape provides a way to showcase different fabrics and designs.

*Hexagons appear frequently in modern block designs. Although a very traditional block, these shapes lend themselves well to showcasing prints, colors and patterns.

*Paper piecing modern quilt blocks allows the ability to create designs difficult to reproduce with regular piecing methods.

*Improvisational blocks allow the quilter to create without an end in mind and to let the fabrics determine the outcome of the block.

Modern quilt blocks often have expansive areas of solid backgrounds which can be any color from traditional white to a more contemporary gray.

www.craftsy.com/article/modern-quilting-blocks

MONTHLY MEETINGS

Our monthly meetings will be held at the Trinity United Church of Christ Fellowship Hall located at 234 North Church Street, Endeavor unless otherwise noted.

July—No Monthly Meeting

August 1 6:00 PM [NOTE Time & Location Change]

- Theme: SURPRISE
- Tonight will be our annual picnic which will be held in the Endeavor Community Center. Invite your neighbors and friends to this annual event.
- Food Assignments: A-G bring salad; H-O bring dessert and P-W bring main dish. Tableware will be provided by the picnic committee and the beverages will be water & lemonade. What's a picnic without lemonade?
- Mystery Guest: Trunk Show features her quilted items. Bring your wallets as there will a shopping opportunity with patterns for sale.
- Charity Support: River Haven Shelter—for each item donated, your name will be entered in a special drawing. Shelter needs: toilet paper, paper towels, shampoo, conditioner, towels & washcloths, laundry detergent, dish detergent. Toothpaste & brushes, bath soap bars, deodorant, toiletries. Taxi vouchers are welcome for job searches & other transportation needs. If you would like to drop perishable food items [milk, eggs, bread, sugar & flour] directly to the shelter, call 608-742-7687.
- UFO Challenge Finale: Page 9 will share all the details

September 12th 6:15 PM Snacks/6:30 PM Meeting [NOTE Date Change]

- PROGRAM: *Panorama of MCQG President's Quilts*-Dee Van Driel. Dee has been quilting for twenty years, has served as president of Mad City Quilt Guild twice since moving to Madison in 2006 and has quilts of wide-ranging fabrics, colors, techniques and "personalities" to share in her trunk show. She is not locked into a category of fabrics nor colors, but she buys what strikes her fancy, rarely with an end-project in mind. She loves to combine LOTS of fabrics in her quilts and usually adds needleturn appliqué. Dee has exhibited quilts at numerous venues and she will present some of her show quilts as well as several new, just-for-fun projects.
- *Reaching Out BOM*
- Show 'n Tell & JOT
- Hostesses

Hostesses:

Thank you for sharing your hospitality with us.

We ask that you have the snacks ready for members by **6:15 PM**. We will start with this and then proceed to our meeting promptly at 6:30 pm.

Doors at the church Fellowship Hall will be opened by 6:00 PM for your convenience unless you make other arrangements.

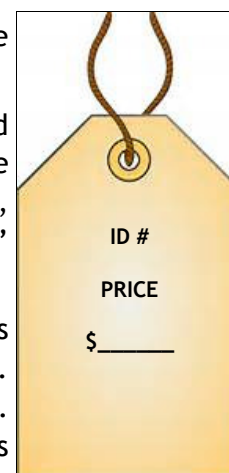
Thank you.

TREASURES . . . SOMETHING OLD , SOMETHING NEW

The *Falling Leaves* Quilt Show being held on October 1st, 2016 will once again feature our Treasures' Sale.

Just a reminder that this show will feature treasures [gently used or maybe not used at all] as in the past and we are continuing on with the *newly created items* as we featured in the last show. So if you love to create fabric purses, totes, table runners, pillows, wallhangings, etc. There will be a place for these items in the treasures' area.

Each item **MUST** include a removable tag with your member ID # and the price. As with previous treasures' sale, the guild gets 10% of the proceeds leaving you with 90%. If you wish for the whole proceeds of the sale to go to CCQG—use their ID# which is 1. NOTE: Any items coming in unmarked with the price will be sent back with you as CCQG is not responsible for the pricing of items.





Greetings from Lakeside Lodge Quilting Retreat

We are excited to announce that the Retreat is now open and available for bookings. Our retreat offers four bedrooms with ten beds and three full bathrooms. Lakeside Retreat offers a very scenic workroom overlooking a private lake located 10 miles northwest of Medford, WI. We are a full-service crafting hideaway. We have ironing stations and a cutting table, as well as a design wall for your use.

Please check out our website at: www.lakesidequiltingretreat.com for more information. For additional questions, please call: Debbie at [715-560-0248](tel:715-560-0248) or Peggy at [715-360-1350](tel:715-360-1350).

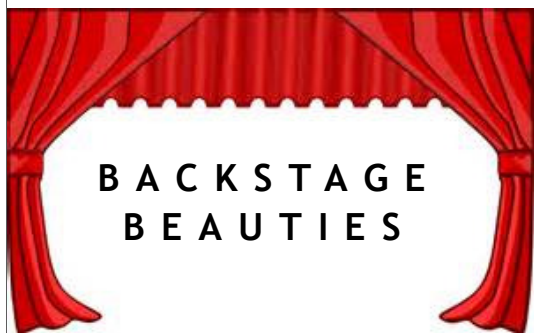
SHOWS THIS SUMMER THAT CCQG MEMBERS HAVE RECEIVED AN INVITATION TO ATTEND:

2016 Quilt Show presented by The Ladies of the Lakes Quilt Guild will be held on August 5th & 6th from 10:00 am—4:00 pm each day. The show is held at Lakeland Union High School, Minocqua. Check out: www.theladiesofthelakes.com

Augustfest Quilt Show presented by the Pine Tree Needles of Mt. Morris will be held on August 13th from 9:00 am—3:00 pm. The show is held at the WWII Memorial Building, Wautoma. For more information or to enter contact Claudette @ 816-210-5223 or MaryAnne @ 920-787-7922

Rio Quilt Show 2016 presented by the Rio Library Quilt Guild will be held on August 13th from 9:00 am—3:00 pm. The show is held at the Rio High School. For more information, contact Marcia @ mfriedma@calpoly.edu

Elizabeth Beese shares in American Patchwork & Quilting August 2014 issue...



'In the fabric world

*Blenders

*Backgrounds

*Tone-on-Tone

*Companion Prints

Are akin to supporting characters in a Broadway show. While the lead gets top billing, there wouldn't be a production without the rest of the cast and a whole host of extras.

This is true in quilting, too, as there are times when the quilt design only shines when no single fabric stands out.'

Remember this the next time you are 'auditioning' fabrics for that quilted project!

COMMUNITY OUTREACH 2016

We have had a very productive year so far! The committee has lost count as to how many quilt tops we have put together so far this year! Note that these tops are ready to quilt so if you have the opportunity and wish to do some—contact one of us & we will see they get your way. Every stitch helps!

May 24th was our last workday until fall. During the summer the Outreach Committee will be working on organizing our guild stash and perhaps making some kits for the DSHC comfort quilts to handout at our September meeting.

We hope all of you have a great summer and can still find time to quilt! Summer can be so busy with house guests, reunions, weddings, gardening, weeding and enjoying the outdoors! Sometimes one actually can be happy when we have a rainy day so there is an excuse to stay indoors and sew!

Your Outreach Committee: Eileen Noegel, Anne Oelke and Janis Proebstle

At the May Outreach Workday, the committee made lunch for us—what a special treat! This was one of the desserts and Anne has shared the recipe of Babs Zehren, Pine Tree Quilters Guild, Wausau

CHOCOLATE LASAGNA (great no-bake summer dessert)

1 pkg. regular Oreo cookies (about 36 cookies--Not Double Stuff)

1 (8 oz) pkg. cream cheese, softened

1/2 c. sugar

2 (3.9 oz. each) pkg. instant chocolate pudding (I used Devils Food pudding)

6 T. butter, melted

2 T. plus 3 1/4 c. cold milk, divided

1 (12 oz) tub Cook Whip, divided

1 1/2 c. mini chocolate chips

Crush cookies with rolling pin or in food processor. Mix cookie crumbs with the melted butter in a large bowl. Mix well. Press crumb mixture into the bottom of 9x13 cake pan. Chill in the refrigerator as you work on the next layer.

Mix cream cheese with mixer until light & fluffy. Add the 2 T. milk & sugar and mix well. Stir in 1 1/4 c. of the Cool Whip. Spread over the crumb mixture in the pan.

Mix chocolate pudding with the 3 1/4 c. of milk, whisking until the pudding starts to thicken. Spread pudding over the cream cheese layer in the pan.

WESTWARD TO MISSOURI ROAD TRIP

Dreams of traveling west to Missouri by our fore-mothers for a better life and opportunities are part of our American history.

Well...some of us still dream of traveling west to Missouri but for another kind of opportunity. A CCQG member and some friends forged their way earlier this spring and tales of their adventures sparked the interest of a few.

B: A group of eight went on a sewing retreat to Missouri Star Quilt Company in Hamilton, Missouri from February 24 - 29. The Sewing Center is used for retreats & gatherings. We stayed in the upper story there, where we had plenty of room to sew and fellowship. We had our own kitchen, one big shared bedroom and a large room for sewing.



Everyone in Hamilton was so friendly, even people not associated with the quilting shops. Hamilton is a very small community with a heart of gold. My first impression was all the fabrics and shops were overwhelming. It pretty much just took my breath away. The first day we just viewed all the shops.

The MSQC originator, Jenny Doan, is just like one of us. If in town, she takes the time to sit and visit with everyone who is there. She has written and published her own quilt books, THE BLOCK. Jenny's quilt books have

8-11 patterns in each book and utilize layer cakes, charms, or jelly rolls. Jenny has a tutorial for most every pattern in these books as well.

We had a chance to go on a tour of their warehouse, which was so rewarding. MSQC specializes in Layer Cakes, Charm Packs, and Jelly Rolls. One thing that stood out to me was how they had photographers that took a picture of every new piece of fabric they put up for sale so the public always got the correct color when ordering.

They longarm quilts there also and that was an interesting part of the warehouse tour. Jenny told us when she does her tutorials she climbs up a long set of stairs to their office where they film them. She is such a vibrant person who just wants everyone to enjoy quilting/sewing as she does. You just come away with such enthusiasm and a desire to sew with their patterns and fabrics. I would recommend everyone to have this experience at least once.

WOW after that who wouldn't want to travel West to Missouri!?!? So our Bucket List Road trip became a reality. But we traveled in modern day convenience [not the covered wagons/wagon trains] and comfort of the automobile. Four of us embarked on a five day adventure in early May.

Actually the 'opportunity' was to experience Hamilton, Missouri and all it had to offer. We left the Pardeeville area at 7:15 am on Monday morning and arrived at Hamilton at 3:55 pm - just enough time to get our bearings before the shops closed at 5:00 pm and then head to our lodging for three nights at the Home Inn Hamilton Bed & Breakfast situated on fifteen acres in a rural area about two miles from downtown. This quaint town is the home of Missouri Star Quilt Co. and it is amazing. Once empty store fronts are now filled with themed shops: Main Shop; Penney's Quilt Shop; MSQC Seasonal; MSQC Mercantile; Batik Boutique; Licensed To Sew; MSQC Kids & Baby; MSQC Modern; MSQC Backing & Trims; MSQC Primitives & Wool; and Florals. Add to these local shops such as Twigs, Rust & Dust and the Farm House Collections and the day is filled with exploring each nook & cranny. Need a pick-me-up, how about dining at Mi México or J's Burger Dive and one can't miss Mama Hawk's Kitchen [the sweet treats are heavenly as well as her paninis- plus she has a line of fabric & patterns that are featured in the bakery/restaurant. Life doesn't get any better than that!]. We would like to share some of our reflections on our travels.

E: This is a trip I will treasure forever!! Even though I don't officially have a "Bucket List" both the trip to Hamilton and the Bed & Breakfast qualify in my mind! Getting away for a few days was delightful. Life gets crazy at times so I simply enjoyed the fellowship, fun and relaxation.

Needless to say, the numerous quilt shops were overwhelming! Since I have only been quilting a few years now, I had a lot of catching up to do. So many ideas...each quilt shop we visited in Missouri & Iowa were different and so inspiring!

After a day of shopping and exploring, we came home to the Inn to relax, unwind, snack and chat - what a wonderful way to end each day.

I had such a wonderful time with my "Sew sisters". I will treasure my memories...

WESTWARD TO MISSOURI ROAD TRIP (c o n ' t)

P: What a fantastic week together-it was so much fun to share this experience with all of these quilting friends. The B & B was the nicest place we could have stayed at and enjoyed making some new friends there with guests from Minnesota, Nebraska & Colorado.

I am so glad we got to go to Hamilton as it is one of the places I had wanted to visit. Barb had shared with us that we needed to be sure to take the warehouse tour. Fortunately, we had booked it back in March as it was closed to tours due to construction when we arrived. But MSQC Events Coordinator (also our Innkeeper) honored the reservation thus taking us through personally. The current MSQC warehouse is 30,000 sq. ft. Construction is underway for one that will be 100,000 sq. ft.

Currently ten long arm quilting machines are located on the second floor working 23 hours a day/6 days a week being closed on Sunday. The plan for the new warehouse is to expand to twenty machines. A world map hangs in this area and you can see that MSQC has received items to longarm from Russia, Japan, Australia, Iceland, Canada, and Africa besides all over the United States.

They now cut their own MSQC templates and rulers with a laser cutter that we saw in action. Once the expansion is complete, they have plans to do all their own pre-cuts and also to add kits to the inventory.

The company employs about 350 local people in the stores and warehouse and once the expansion is complete plans are to increase to 500+. All employees we talked to seemed really happy to be there and very helpful taking pride in not only their portion of the company but in their customer service goals.

Hamilton is located in the poorest economically county in Missouri. It is a town of a little over 1,900 people. The main street is typical of a rural community town.

We got to meet Jenny Doan in person at the Penney's store late afternoon as she was just returning from a filming in Utah. She was very friendly and generous with her time-posed for photo opts & signed autographs and chatted with visitors.



On Wednesday afternoon, we ventured out to view some of the country-side along Missouri Highway 36. Much to our delight, there was a Quilt Trail Shop Hop themed this year with barn quilts so we took in a couple of the stores in Missouri. Instead of driving straight through to home on Thursday, we decided to take an extra day. So amazing how nice it was to 'stretch our legs' and wouldn't you know...an Iowa quilt shop always seemed to be at that destination.

J: What a wonderful road trip! I so enjoyed every minute! Thursday we said good bye to our wonderful innkeeper, Meg (also the Events Coordinator for MSQC) at Home Inn Hamilton B&B and after a wonderful breakfast, we loaded the car with ALL our goodies to head off on our final leg of our adventure!

Our first stop was at Creekside Quilting in Clive Iowa. What a wonderful shop! When we finished at this store we had a lovely outdoor picnic in a grassy area under a tree at the edge of the parking lot! (We had better weather going home than going down to Missouri in the rain & wind.)

We then continued north to the Amana Colonies. We arrived mid-afternoon to the Heritage Designs Inc. Quilt Shop. In addition to all the fabric they had, I found fifty bolts of fabric, one for each state with the state flower on it! It was part of a block challenge. Of course I had to buy a fat quarter of fabric for Illinois (my home state) and Wisconsin were I now live! After we left there we roamed the streets of Amana Colonies looking through some of the shops. One stop where I think we all bought something was the Chocolate Shop! Quilting & chocolate of course go together! We ate dinner at the Ronneburg restaurant there for an authentic German (European) meal.

After a good night's rest in Williamsburg, we headed out Friday morning for home but of course not without a stop or two at quilt shops! The first one was the Quiltmakers Shoppe in Manchester. Our last stop was at the Vintage Threads Quilt Shoppe in Dyersville. With Patti's help, I found fabric at this last stop with the right kind of tractors on it for a pillow case I wanted to make for my grandson Oliver! Can you guess what tractor I was looking for?

We made every minute count, whether it was to shop for fabric, spend time getting to know each other better or meeting some wonder people along the way! It was a blast! I have never taken more than a one day road trip for quilting before. Now I can check Missouri Star Quilt Company in Hamilton off my bucket list!

Arriving back in Pardeeville Friday afternoon around 3:45 pm and having our bucket list road trip coming to an end this journey had been just perfect. How wonderful to spend time with friends and have those friendship deepen because of quality time spent together sharing our love of quilting, family, & faith.

QUILT SHOW 2016 . . . FALLING LEAVES

Saturday, October 1, 2016 9:00 am–4:00 pm

Oxford Grade School 222 South Franklin Street Oxford, Wisconsin

QUILT SHOW UPDATES

Registration Instructions:

1. **One entry per form** [you may photocopy entry form on page 4 for additional entries].
2. Quilted items entered should be in *show condition*—free of stains, odors, pet hair, etc.
3. Quilted items you wish to sell must be marked accordingly with contact information.
The guild WILL NOT be responsible for pricing or payment arrangements.
4. Quilted entries should be labeled on the back with a **paper sewn on tag** including the name of the quilted item; entrant's name; address & phone number plus your CCQG member ID# (example at right). For more efficient registration when dropping off your quilt, please have the entry folded so that the paper tag is showing. **NOTE:** We know you have labeled your quilt already BUT ask that this paper tag be affixed for this show.
5. You are encouraged to share your quilted project's story. Please include a **typed** short story and have it in a plastic sheet protector.
6. Quilted entries will be hung with clips so sleeves are not mandatory.
7. Quilted entries may be dropped at Teapot Quilts, Montello on Thursday, September 29th from 11:00 am–1:00 pm OR at the Oxford Grade School, Oxford on Friday, September 30th at 4:00 pm.
8. On day of show at 4:00 pm, the doors will be closed as the quilt entries are taken down. Entries **MUST** be picked up between 4:30-5:00 pm on Saturday, October 1st. A claim ticket must be shown when picking up or items WILL NOT be released.
9. Reasonable care will be taken to prevent loss or damage to entrant's property, however, entrant agrees not to hold Calico Capers Quilt Guild, Teapot Quilts or Oxford Public Grade School responsible for any and all liability arising from any or all damage and loss of entrant's property.
10. Signature on each entry form implies acceptance of rules listed. Entries will not be accepted without a signature.
11. Entry forms on page 4 of this newsletter.
12. Return your completed entry form(s) to: Jeanne Metcalf N2645 10th Road Montello, WI 53949 by Tuesday, September 2, 2016. Questions??? Contact a quilt show committee member.

MORE INFO!!!

- Show Themed Entries
- \$8 Specials Exhibit
- Community Outreach Display
- Quilt Raffle
- Special Event, Speaker, Featured Vendor or Bed-turning/Pending
- Vintage Sewing Machines & Sewing Station
- Marquette County Barn Quilt Trail Exhibit
- Food area hosted by the Moundville HCE
- Friends of the Oxford Public Library
- Sign-up to lend a hand [this is YOUR show so YOUR help makes it a success]-areas volunteers are needed are:

-Setup & Hang Quilts/Friday @ 4:00 pm

-Treasures' Sale [New and Gently Used Items]

-Welcoming & Admissions

-White Glove Patrol

-Take down Show & Quilts/Saturday @ 4:00 pm

Q U I L T S H O W 2 0 1 6 . . . F A L L I N G L E A V E S

Saturday, October 1, 2016 9:00 am—4:00 pm

Oxford Grade School 222 South Franklin Street Oxford, Wisconsin**QUILT SHOW ENTRY FORM** -due September 2, 2016

Monetary Awards for Top Three Quilts:

1st \$100.00; 2nd \$75.00 & 3rd \$50.00

Selection of Winner by Viewers' Choice Ballot

NAME _____ CCQG ID# _____ Phone/Cell _____

ADDRESS _____ CITY _____ STATE _____ ZIP _____

BEDSIZED QUILTS—The bed quilt must be 60-inches x 80-inches or more.

- ☐ A. Appliqué, Mixed or Other (hand or machine pieced)
☐ B. Pieced (hand or machine pieced)
☐ C. Scraps (hand or machine pieced with 30 or more different fabrics)

WALL QUILTS, CRIB QUILTS or LAP QUILTS

- ☐ F. Appliqué
☐ G. Pieced
☐ H. Pictorial/Scenic
☐ I. Miniature

PRE-CUTS

- ☐ J. Layer Cake
☐ K. Jelly Roll
☐ L. Charm Pak
☐ M. Fat Quarters

CCQG SPONSORED WORKSHOP

- ☐ N. Workshop Name

CCQG \$8 SPECIAL

- ☐ O. \$8 Special Name

OTHER QUILTED ITEMS

- ☐ P. Home Accessories
☐ Q. Clothing
☐ R. Purses/Totes

VINTAGE AND/OR ANTIQUE

- ☐ S. Antique (list dimensions)
☐ T. Vintage (list dimensions)

TITLE/PATTERN of ENTRY _____

Method of Quilting (please circle one) HAND HOME SEWING MACHINE LONGARM

I understand that reasonable care will be taken to protect my entry. I understand that no responsibility for loss or damage at any time to my entry can be assumed by Calico Capers Quilt Guild, Teapot Quilts or Oxford Grade School or any other entity. I further understand that Calico Capers Quilt Guild are not responsible for any photographs placed on websites or social media sites.

ENTRANT SIGNATURE agreeing to rules _____

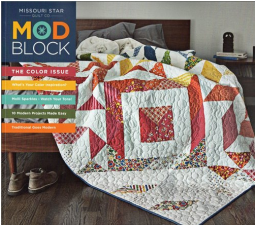
ONE entry per form (you may photocopy this entry for additional entries).

BOOK REPORT

With the 'modern' theme going on throughout this newsletter—the Newsletter Committee decided to feature two books that focus on this topic in her quarterly book reports.

**Define
Modern**

'simple yet
energetic'



Missouri Star Quilt Company has a new book titled, MOD BLOCK. We are familiar with the BLOCK book which has both traditional and modern projects. This book comes out once a year and was first released in 2015.

The latest issue has ten patterns, informative articles and beautiful pictures focusing on the modern theme. All this and no advertising!

In the book they say their philosophy has always been that quilting should be fun, that there are no quilt police and that a mistake is really just a new idea waiting to be developed!



SUNDAY MORNING QUILTS is another modern quilting book. This book is by Amanda Jean Nyberg & Cheryl Arkison.

Their book has sixteen modern quilt projects. They have many informative chapters and explain the modern quilt movement. The cover tells us to '*sort, store and use every last bit of your treasured fabrics*'. My sorting is still a work in progress!

One page deals with 'snippets, strings, selvages and more'.

So if the modern quilts intrigue you—try these fun books!

STITCHIN' SISTERS HANDMADE TREASURES



This fun shop full of homemade treasures is located at 229 N Hwy 51, Arlington WI. Stop in to purchase an everlasting treasure!

They feature purses, totes, wallhangings, quilts, custom orders and so much more. The shop is open every Friday & Saturday for the season from 9:00 am - 3:00 pm.

You can find Stitchin' Sisters Handmade Treasures at

www.Stitchinsistershandmadetreasures.com

or by calling 608-547-0948/928-846-0723.

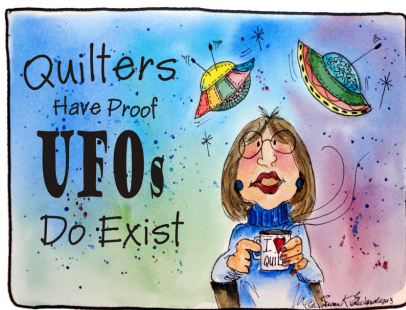
CYNDIKATION RETREAT RECAP

The pattern "Summer Sunshine" was taught by KD & CF using their Cyndikation method. Eight CCQG members and eight more area quilters met in the Red Barn on the first really great Spring day to learn, hear birds, music, and walk hiking trails (if one could tear yourself away from quilting) and enjoy delicious lunches. On the second day everyone arrived before 8:00 AM— anxious to finish their quilts. We learned everything from Cyndikation, double-sided binding to threading a sewing needle.

We want to thank KD for offering her place along with refreshments and snacks. She has offered the guild members to come and she will teach her method of paper piecing of miniature quilts. If there is an interest, let us know.

The Retreat Committee

UFO CHALLENGE FINALE



At our monthly CCQG meeting in January 2016, twenty-two members took on this UFO Challenge by turning in their list of six (6) UFOs that they would finish up by the August 1st picnic. Each month a number [1-6] was drawn by the committee thus giving the 'challenged' the sequence in which to complete their UFOs.

At of our monthly guild meetings, the finished project was shared at the Show 'n Tell and the committee marked it off the member's submitted list.

Well...summer is almost upon us and you have until August 1st to get those final stitches in your UFOs. The committee will be set up at the picnic and any finished UFOs may be presented that night. Finished means quilted & bound.

A drawing will be held once all the UFOs have been documented that evening. Remember the challenge was to have six UFOs completed and presented.

If you have already shared your completed UFOs at a monthly meeting there is no need to present them again as they have been documented by the committee.

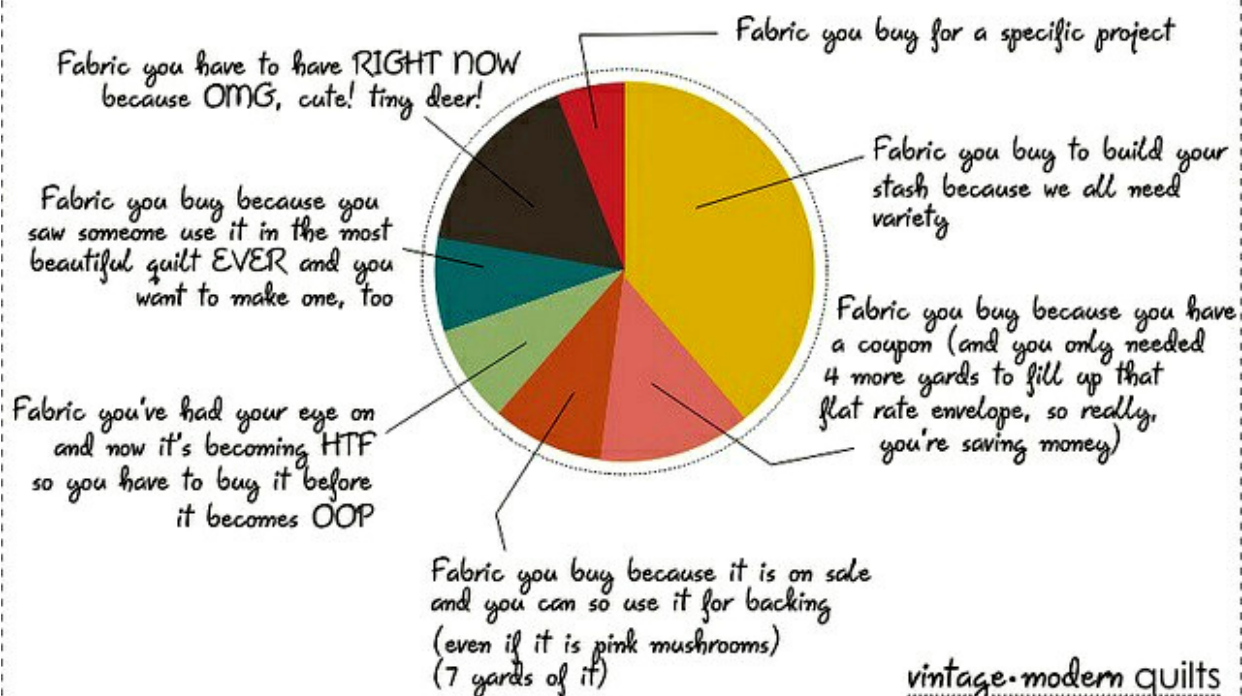
It has been exciting to watch at each meeting as projects that once were tucked away unfinished are coming to light and finished! Thanks for taking on this challenge.

Special Events Committee

I love a little shower of rain. It's just so peaceful to sit at my sewing machine and listen to the gentle pitter-pat of raindrops on the window. It's too wet to work in the yard, too wet to run to the grocery store, and way too wet to cut the grass. I've racked my brain and come to the conclusion that on a rainy day, the best use of my time is quilting! (Curiously, I've come to the same conclusion about sunny days, snowy days, and even plagues-of-locust days.)

-Jenny Doan, MSQC

Quilting Economics



SEW AN ACCURATE QUARTER INCH SEAM

Why is it Important to Sew an Accurate Quarter Inch Seam Allowance? If seam allowances are off, patchwork pieces will not match-up with each other properly when it's time to sew components together.

You might not notice a seam allowance that isn't quite right when you sew together batches of same-sized squares to make a quilt. If the seams are all the same width, patches will still align correctly. Incorrect spacing becomes a problem when sewing together patchwork units that have a different number of seams within their boundaries.

It is extremely important that you check your seam allowance and stitch length EACH time you sit down to do block construction.

Set Up the Sewing Machine to Test the Seam Allowance. Set up your sewing machine to sew an exact quarter inch seam, the standard seam allowance used for quilts. Once you've mastered a quarter inch seam, your blocks will have units with sharp points and crisp corners, and they'll fit together perfectly when it's time to assemble the block or quilt.

Some patterns will tell you to sew a 'scant' quarter inch seam allowance -when you see the term used, make the seam allowance about a pencil line's width narrower than 1/4".

You'll probably find that a scant seam is best for all patchwork, so it's important to test your seam allowance before you begin to sew.

Materials Required to Test a Seam Allowance

- Rotary cutter, mat and long rotary ruler
- Iron and ironing board
- Sewing machine with a quarter-inch presser foot; use the standard foot if you do not have a quarter-inch foot
- 2 light fabric strips, each 2" x 4"
- 1 dark fabric strip, 2" x 4"

Let's Test the Seam Allowance

1. Install a quarter-inch or standard presser foot on your sewing machine. If using a standard presser foot, try to determine which vertical groove on the machine's throat plate is equal to a 1/4" seam allowance.

2. Align a 2" x 4" light strip with a 2" x 4" dark strip, right sides together and edges carefully matched.

3. Sew the patches together lengthwise, feeding them through the machine with the 1/4" presser foot's right edge aligned exactly with the right edge of the patches. For a standard foot, align edges with the mark for 1/4".

4. Sew another light strip to the opposite edge of the dark strip.

5. Press to set the seams and then press seam allowances toward the dark strip.

6. Use a rotary ruler to measure the dark center strip. It should be exactly 1-1/2" wide along its entire length. The outer strips should be exactly 1-3/4" wide along their entire lengths.

If the dimensions of your pieced unit are accurate -- congratulations! You're ready to sew a quilt. If the size is a bit off...

Inspect the strips carefully if they are not the correct size:

- Were seam allowances pressed adequately? It's easy to "lose" width in patches that aren't fully pressed. Press again and recheck.

- Make sure aligned strip edges didn't shift away from each other when you sewed the seam. If they did, try placing a very warm iron on top of the next set of patches before sewing to help them stick together, or secure their edges with fine pins.

- Are the seams irregular, wide in some spots and narrow in others? Sew more slowly to improve accuracy. Set the machine to run on half speed if possible.

Sew another set of strips, and then press and measure. If dimensions are still not accurate, don't worry, you'll get there with a few more changes like consider changing the needle position.



There are numerous on-line tutorials focusing on this topic of accurate seam allowances.

Take time to review one or more to secure some valuable tips.

NOTE: BOM's turned in for CCQG Community Outreach **need to have precise seam allowances & stitch length** so that projects go together well when blocks created by others are sewn into tops.

Please check your allowances and length each time you sit down to sew BOM—it is appreciated as is your donation to the *Reaching Out* outreach of our guild.

Thank you for sharing your time & stitches.